

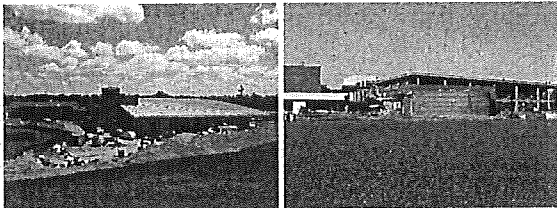
Bond Issue Construction Update

Thomas W. Wiseman
Assistant Superintendent of
Business Services
June 2, 2005

WMHS-WKHS Swimming Pools, Physical Education Additions

- 40,000 sq. ft. ea. site
- Award Date: August 19, 2004
- Start Date: August 30, 2004
- Completion: February, 2006
- Includes: 8 lane competitive pool, elevated seating for 400 spectators, instructional pool that is whirlpool equipped with a handicap accessible ramp, and a fitness center for student and community use

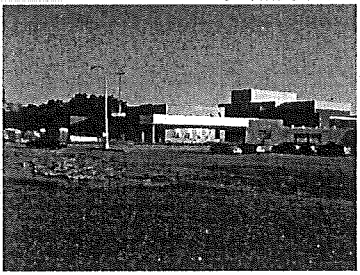
WMHS-WKHS Swimming Pools, Physical Education Additions



WMHS
Classroom addition

- 16,250 sq. ft.
 - 1 SMI/SXI classroom
 - 2 TMI classrooms
 - 4 general education classrooms
- Award Date: August 19, 2004
- Start Date: August 30, 2004
- Completion: August 1, 2005

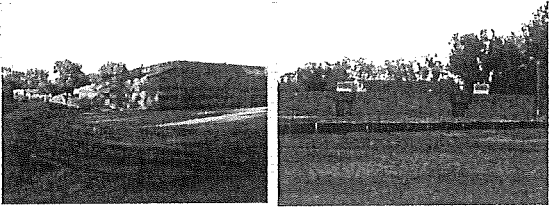
WMHS
Classroom addition



Riverside & Knudsen
Gymnasium and Kitchen Cafeteria/Multi-purpose Room Addition, Renovation

- 6,000 sq. ft. Riverside
 - New kitchen/gym
 - Renovation to existing multi-purpose room
- 5,500 sq. ft. Knudsen
 - New gym
 - Renovation of existing kitchen and cafeteria
- Award Date: April 7, 2005
- Start Date: May 1, 2005
- Completion: Spring, 2006

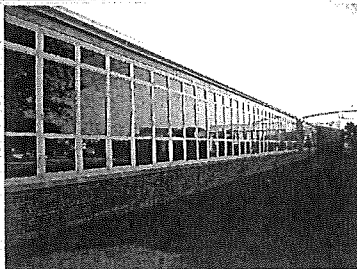
Riverside & Knudsen
Gymnasium and Kitchen Cafeteria/Multi-purpose
Room Addition, Renovation:



WKHS
Windows

- Award Date: March 17, 2005
- Start Date: June 15, 2005
- Completion: August 15, 2005

WKHS
Windows



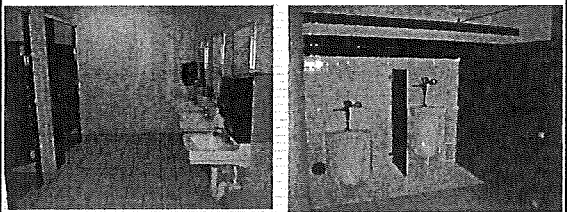
KMS Classroom Renovations

- 28,000 sq. ft. of renovation of 12 classrooms to include casework and floors
- Award Date: February 3, 2005
- Start Date: June 15, 2005
- Completion: August 15, 2005

Elementary Restroom Renovations

- 4,000 sq. ft. at Burt, Cooley, Haviland, Houghton, Leggett, Schoolcraft, Waterford Village
- Award Date: February 3, 2005
- Start Date: June 15, 2005
- Completion: August 15, 2005
- Will include: porcelain floor tile, ceramic wall tile, new fixtures, all automatic faucets & flush valves, electric hand dryers, lights and ceilings

Elementary Restroom Renovations



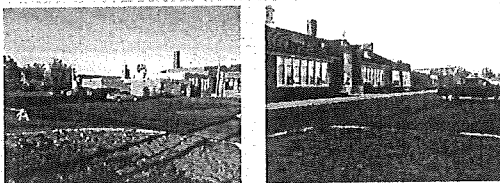
Stepanski Classroom Remodeling

- 12,000 sq. ft. involving 13 classrooms, 4 workrooms and 2 restrooms
- Award Date: February 3, 2005
- Start Date: June 15, 2005
- Completion: August 15, 2005

Covert Parking Lot

- 110 parking spaces
- Award Date: October 21, 2004
- Start Date: May 9, 2005
- Completion: June 21, 2005

Covert Parking Lot



Knudsen Roof

- 32,000 sq. ft.
- Award Date: March 17, 2005
- Start Date: March 28, 2005
- Completion: April 1, 2005

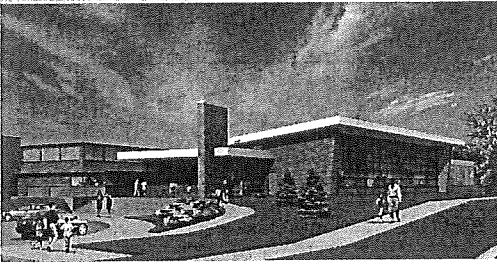
Knudsen Roof



Crary Middle School

- 7,845 sq. ft. which includes a new entrance, a new computer lab and a new parking lot (79,955 sq. ft.)
- Renovation of 2,412 sq. ft. of existing space
- Start Date: July 25, 2005
- Completion: Spring, 2006

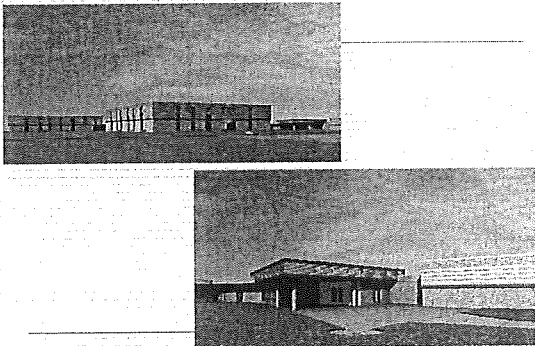
Crary Middle School



Mason Middle School

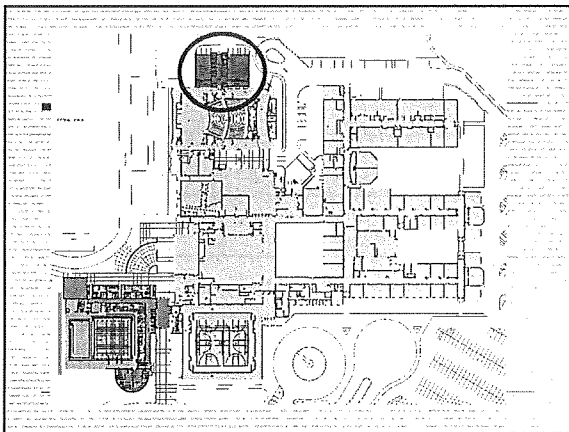
- Replacement of Mansard Roof, new east parking area and new entrance
- Start Date: July, 2005
- Completion: Spring, 2006

Mason Middle School



WKHS
Music Suite Addition

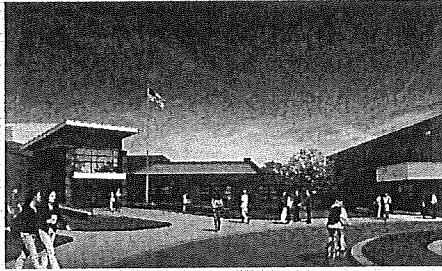
- 9,920 sq. ft. which includes:
 - Instrument music room
 - Vocal music room
 - Instrument storage areas
 - Practice rooms
 - offices
- Start Date: August, 2005
- Completion: Spring, 2006



WMHS
Classroom and Entrance Addition

- 7,186 sq. ft. which includes a new entrance and 4 new classrooms and remodeling of 9,483 sq. ft. of existing space
- Start Date: July, 2005
- Completion: Summer, 2006

WMHS
Classroom and Entrance Addition



WMHS
South Parking Lot – Redesign & Expansion

- Award Date: June 2, 2005
- Start Date: June 15, 2005
- Completion: August, 2005
- 170,800 sq. ft. of parking lot

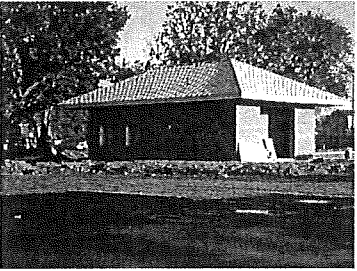
WMHS
North Parking Lot

- Award Date: Summer, 2006
- Start Date: Summer, 2006
- Completion: Summer, 2006
- 191,100 sq. ft. of parking lot

Pierce Concession Stand
Funded through Sale of M59/Cr. Lake Property

- Award Date: November 4, 2004
- Start Date: November 8, 2004
- Completion: Summer, 2005

Pierce Concession Stand
Funded through Sale of M59/Cr. Lake Property



Four Towns
Asbestos Removal-Demolition

- Funded by Early buy-out of Lease Agreement for Donelson Building with Oakland Schools; reimbursed through sale of property
- Demolition is projected to begin in August, 2005

**Summer 2005
Work in Progress**

188,596 sq. ft	Construction (equivalent to Mason Middle School)
521,000 sq. ft. (appr.)	Parking lot improvements
\$38,000,000	Total contract amounts
