

# WELCOME TO Kindergarten

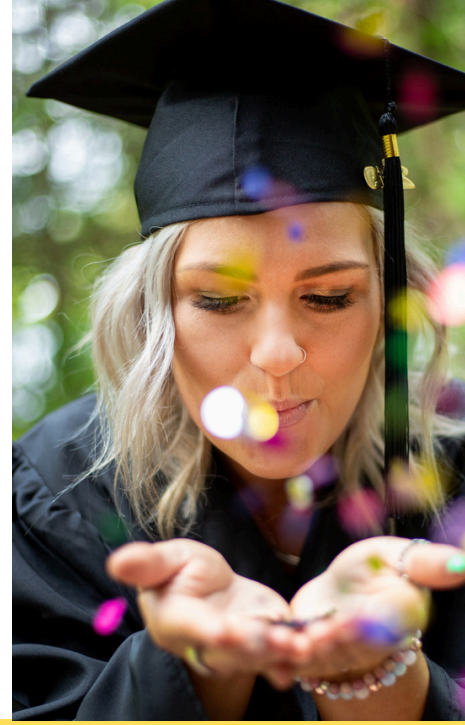




Today's Student,



Tomorrow's Leader.



# **Waterford School District Board of Education**

Pat Donohue

Elizabeth McGregor

Robert Petrusha, Jr.

Michael Ristich, Ph.D.

Kim Soncrainte

John Paul Torres

Kristen Wagner



# WELCOME!

Dear parents,

We are so happy to welcome you to Waterford School District! Hold on tight, because the next 13 years are going to fly by, and pretty soon you'll be watching your child walk across the stage at graduation. It's a beautiful journey, and we're happy you're sharing it with us.

Starting kindergarten is an exciting milestone, not just for your child but for the entire family. It's a time of discovery, growth and building a love of learning that will last a lifetime. At Waterford, we are committed to nurturing not only your child's academic abilities but also their social and emotional development.

You have made an excellent decision in choosing Waterford; this is an amazing school district with dedicated and loving staff who strive to create a welcoming and safe environment where every child feels valued and supported.

Welcome to our Waterford family. A bright future awaits.



# JUNIOR KINDERGARTEN

## IS YOUR CHILD A GOOD FIT FOR JUNIOR KINDERGARTEN?

Students grow and develop at different rates. Junior Kindergarten enrollment is not based on academics, but is for students who need a little more time to mature and develop socially in order to be prepared for the more structured kindergarten program. If your child has a June, July or August birthday, Junior Kindergarten may be a perfect option for your family!

Our Junior Kindergarten classrooms are taught by WSD teachers who specialize in young children and their development. They will help students prepare for Kindergarten the following year by introducing literacy, math and science skills. Students will also learn social skills such as how to manage themselves in the school environment and develop positive interpersonal relationship abilities. Junior Kindergarten students participate in music, physical education, art and media center, in addition to their core subjects.

The State of Michigan has changed the school entrance date for Kindergarten to Sept. 1. If your child turns five between Sept. 2 and Dec. 1, and you would like to start their elementary experience, you are welcome to enroll your child in our Junior Kindergarten program!

Applications for Junior Kindergarten are available through your child's school, Central Enrollment, or by filling out the Junior Kindergarten Application online on our WSD website. **Families must fill out an application to be considered for our Junior Kindergarten program before enrolling.**



For more information on Waterford School District's Junior Kindergarten program, scan the QR code or visit [wsdmi.org](http://wsdmi.org).



# PREPARING FOR KINDERGARTEN

## PHYSICAL

- Help your child consistently use the bathroom independently
- Work with your child to put on his/her own clothes
- Help your child hold a pencil or crayon correctly
- Provide opportunities for your child to use scissors and glue
- Work with your child so they can tie their shoes

## SOCIAL/EMOTIONAL

- Introduce your child to other children to help them make new friends
- Help your child take turns when playing with other children
- Work with your child so that they can separate from others easily
- Work with your child so that they can ask for things they might need
- Play with other children to learn to be respectful of one another
- Read books to your child so that they can sit long enough to listen to a story

## ACADEMIC

- Help your child identify the letters of the alphabet and numbers
- Work with your child to recognize and/or write his/her name
- Help your child practice writing letters of the alphabet
- Sing songs together to recite the alphabet and numbers
- Introduce your child to new things and experiences
- Help your child use a book correctly (front cover/back cover)
- Work with your child to learn that sentences run left to right



# CURRICULUM

## MATHEMATICS

### IS LEARNED THROUGH:

- recognizing numbers and understanding the value they represent.
- using a variety of concrete objects to count, sort, measure, graph, order.
- recognizing and creating patterns.
- comparing sizes, distances and quantities.
- applying these concepts in the world around them.

## SOCIAL STUDIES

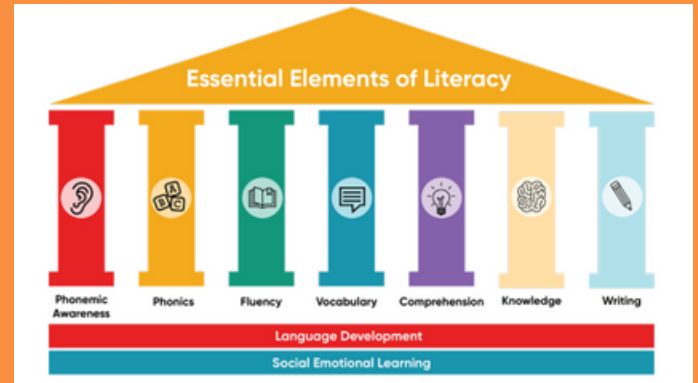
### IS LEARNED THROUGH THE LENS OF "MYSELF AND OTHERS" BY STUDENTS:

- understanding their role within the family, classroom, school and community.
- investigating the United States and its symbols.
- distinguishing between past, present and future.
- using maps and globes to identify places.
- researching community helpers and other occupations.

## LITERACY

### IS LEARNED THROUGH:

- Systematic and explicit instruction in each of the five main pillars of literacy, as well as additional pillars that represent the whole child.



- Students engage in nine modules that center on an Essential Question of growing students' understanding of the world around them.
- Research-aligned foundational skills instruction using resources, lessons and precise language to help our students "crack the code" of reading.
- Daily opportunities for the whole group, small group and individualized literacy instruction.



## SCIENCE

### ENGAGES STUDENTS IN ANSWERING THESE KEY QUESTIONS:

- How do we describe weather and how should we prepare for weather events?
- How do different pushes and pulls affect the motion of an object?
- What are the basic needs of living things?
- What impact does the environment have on the needs of living things?

For more information on Waterford School District's Junior Kindergarten and Kindergarten Curriculum, scan the QR code or visit [wsdmi.org](http://wsdmi.org).





# ENCORE CURRICULUM

Kindergarten students participate in exploring music, physical education, art, Spanish, and the media center, in addition to their core instruction.

## Visual Arts:

Students focus on working with colors and understanding how they blend, as well as creating shapes, patterns and textures. Activities focus on improving motor skills while developing an understanding of, and appreciation for, visual arts.

## Spanish:

Students learn basic conversational Spanish through song, dance and play. Students also learn about Spanish culture. Activities support communication and promote an appreciation of cultural diversity.

## Media Center:

Students learn appreciation for what a media center offers, as well as respect and care for books. They learn the basic operation of a library as part of a media center.



## Physical Education:

Students focus on large muscle activities that build coordination, cooperation through team activities and self-confidence. Gym shoes are very important for the class.

## Music:

Students will develop musical awareness and techniques through singing, playing instruments, dramatic play and body movements. Activities promote an appreciation for music.

## Extracurricular Activities:

Destination Imagination, STEM Cardboard Challenge, Girl Scouts/Brownies, Game Club, Student Light House, Team Lego Club, Running Club, Hour of Code, Chess Club, Math Olympiad, VEX Robotics, CS Google and Girls Who Code



For more information on Waterford School District's ENCORE Curriculum, scan the QR code or visit [wsdmi.org](http://wsdmi.org).

# INSTRUCTIONAL TECHNOLOGY

## STUDENT CHROMEBOOKS:

In Waterford School District, we are a 1:1 student device district, which means each K-12 student will be issued a district student Chromebook that can be utilized in and outside of the classroom throughout the school year. Your child will begin to learn technology skills through all curricular areas including literacy, mathematics, Problem-Based Learning and so much more. Your child will also have access to many instructional programs through their devices including Lexia Core5 and Amira for literacy as well as DreamBox Learning for mathematics.

## LEXIA:

Each of our elementary students is able to grow and learn with the Lexia Core5 blending learning program. The program utilizes innovative advanced technology to support each learner at an individual level to develop their reading, writing and speaking skills and confidence.

## DREAMBOX:

Each of our elementary and middle school students is able to move their mathematic skill learning and retention forward with DreamBox. DreamBox provides personalized math learning to ensure students at every level stay motivated and receive the right instruction at the right time.



## AMIRA:

Amira is the first artificial intelligence (AI) reading assistant that listens to, assesses and tutors students as they read. With Amira's capabilities, K-5th grade students have effective reading practice opportunities with customized, in-the-moment feedback to enhance their literacy growth.



For more information on Waterford School District's Instructional Technology, scan the QR code or visit [wsdmi.org](http://wsdmi.org).



# TRANSPORTATION

On behalf of Waterford School District Transportation Department, we would like to welcome you and your student.

We take our mission of transporting students very seriously. Our staff is the first and last representative of the school district many students have and it cannot be stressed enough that we understand how important it is for our children to have a positive start and end to their school day.

The Transportation Department provides many services that benefit the students and staff of Waterford School District. In addition to providing transportation to and from school, other special runs are performed such as school field trips, athletics and shuttles to technical campuses, to name a few.

We have over 40 buses daily traversing the 40 square miles which make up Waterford School District. Our goal and primary mission is to safely and efficiently transport your child to and from school and our excellent staff is committed to achieving this mission.

Our buses range in size from 58 passenger to 77 passenger, including buses outfitted with wheelchair lifts.

The Transportation Department developed a Safe Bus Rider Program that visits each elementary at the beginning of the school year to teach students about safe bus riding rules and habits. The program is taught by our drivers and is helpful toward building positive relationships with our kids.

A couple of unique rules we have in regard to transporting your kindergarten child:

1. Someone must be at the stop to receive your child after school. Whether it is you, a grandparent, aunt, neighbor or an older sibling, the bus driver will not leave your kindergarten (or pre-K) student at the stop unless there is someone to receive them.
2. Bus tags are provided for all kindergarten students which attach to their backpack. The bus tags greatly assist in the identification and location of your child's bus stop information.



For more information on Waterford School District's Transportation program, scan the QR code or visit [wsdmi.org](http://wsdmi.org).

# FOOD & NUTRITION SERVICES

## BREAKFAST AND LUNCH

Waterford School District participates in the State of Michigan's "Healthy School Meals For All" and the Community Eligibility Provision (CEP) programs, which allow the district to offer one breakfast and one lunch per student each school day at no cost for the full year. The benefits of participating in both programs are enormous because they increase breakfast and lunch participation, which is proven to translate to better grades and test scores, plus improve nutrition. Students have the option to purchase additional meals, if they so choose.

Our team of professionals is ready to meet your child's hunger for food and health. Our breakfast and lunches are planned with three things in mind: nutrition for growing bodies, foods they love for healthy appetites and prices that are of value to you. Our breakfast offerings align with the National School Breakfast Program guidelines. One example of what is provided to students daily is pancakes, applesauce, milk &/or juice. For lunch, at least two entree selections are offered daily, including our Fresh Choice salad bar. Fresh fruits and vegetables and 1% white and chocolate milk are available with all meals. Menus are posted on the school district website monthly.

## Payment

The Waterford School District Food and Nutrition Services Department uses the computerized point of sale system called Meal Magic. An account is established for every student in the district using their student identification number. Each account contains their photo, class, grade and account balance, along with their ID number. Parents have online access to their child's account through [Waterford.FamilyPortal.cloud](http://Waterford.FamilyPortal.cloud). This site provides access to the Education Benefits Form, online money deposits into student accounts, and the ability to check account balances and view purchase history. There is a minimum of \$1 deposit, and all deposits made online will be credited to accounts within minutes. Payments can also be made by cash or check at the school.



For more information on Waterford School District's Food Service program, scan the QR code or visit [wsdmi.org](http://wsdmi.org).



# CHILD CARE



Our licensed Child Care offers a school-age program for before and after school in each of our elementary buildings (K-5), as well as our Stepanski Early Childhood Center. Our programs are staffed by qualified, experienced professionals who have continual training in the child care field.



For more information on Waterford School District's Child Care program, scan the QR code or visit [wsdmi.org](http://wsdmi.org).



# ENROLLMENT

We are so happy you are interested in enrolling your child(ren) in Waterford School District! Any family who wishes to be part of the Waterford School District community must enroll their child through our Central Enrollment office. You may complete the enrollment form online or come visit us in person. Central Enrollment will contact the parent once the online enrollment has been submitted and received. Students cannot start school until all pieces of the enrollment process have been completed. Please see the provided list on what documentation is needed to successfully enroll in Waterford School District.





# DOCUMENTATION

1. Proof of Parentage (Parents enrolling the student must be on **both** the birth certificate and residency documentation.)
  - A. Original birth certificate with official translation, if not in English.
  - B. Photo Identification for the parent. Parent enrolling must be listed on the birth certificate.
  - C. Custody/divorce documents if applicable.
  - D. Legal guardianship or foster care placement documents if applicable.
2. Residency requirements:
  - A. Own A Home
    - i. Mortgage/property tax statement, two current (different) utility bills, parent's identification.
  - B. Lease a Home
    - i. Lease with parent listed as an occupant, two current (different) utility bills, parent's identification.
  - C. Living with a Waterford School District resident
    - i. Notarized Central Enrollment Affidavit for housing completed by **both** the homeowner and parent staying at the residence (for homestead only).
    - ii. Mortgage/property tax statement of homeowner, two current (different) utility bills, homeowner's identification.
    - iii. When staying with someone who is renting an apartment.
      1. If the parent is staying with someone in an apartment, they **MUST** be added to the lease as an occupant in order for WSD to accept.
      2. Two current (different) utility bills, renter's identification.
    - iv. Parent will need to provide two pieces of mail going to the address listed where they are staying.



For additional information about enrolling  
in Waterford School District,  
scan the QR code or visit [wsdmi.org](http://wsdmi.org).



Beaumont Elementary



Cooley Elementary



Donelson Hills Elementary



Grayson Elementary



Haviland Elementary



Houghton Elementary



Knudsen Elementary



Riverside Elementary



Schoolcraft Elementary



Mason Middle School



Pierce Middle School



Durant High School



Kettering High School



Mott High School





Inspired, Educated, and Empowered  
to thrive

# Stay Connected!

[www.wsdmi.org](http://www.wsdmi.org)



## CONNECT



Newsletter  
[scs@wsdmi.org](mailto:scs@wsdmi.org)

## FOLLOW



@wsdnews

## LISTEN



WSD Voice  
Podcast on  
our website

## WATCH



Comcast  
Channel 22

Today's Student,



**TOMORROW'S LEADER.**



**Waterford school district is uniquely prepared  
to build your child's future!**



**Enroll Today!**  
**[wsdmi.org/enrollment](https://wsdmi.org/enrollment)**